

Golden Hope Mines Limited (GNH:TSX-V, PinkSheets: GOLHF) is focused on growing shareholder value through the acquisition, exploration and development of potentially large-scale gold and base metal projects. The Company's main project consists of the Bellechasse gold belt in Southern Quebec, Canada. The property is located on a mineralized belt that is mostly owned by Golden Hope and which includes the Bellechasse-Timmins gold deposit. The Company aims to explore and develop this flagship project into a world-class gold asset in an under explored region of one of the friendliest mining jurisdictions with excellent access and low cost infrastructure.

## Investment Highlights

- 27,000m+ drilled in 2010 and 2011
- \$8MM+ spent on exploration in 2010 and 2011
- 43-101 Resource estimate expected on flagship Bellechasse-Timmins Gold Deposit in Q1 2012
- Potential for repeated Gold and Polymetallic deposits on 20km claim block
- Dominant and most advanced player in Southeastern Quebec
- Highly differentiated gold play within Quebec, Canada
- Working Capital C\$2.8 million (Feb. 2012)

## The Bellechasse Gold Belt, Quebec: Target Multi-Million Ounce Deposits

- Two of the largest gold nuggets found in Canada came from the region: The Kilgour nugget at 52 ounces and the McDonald nugget at 45 ounces.
- 2009/2010 staking rush:

Total	Claims	221,512 (ha)
Golden Hope (GNH-V)	554	24,436
Bowmore (BOW-V) / Osisko (OSK-T)	1,429	83,500
Fancamp Exploration (FNC-V)	2,073	113,576

\*See staking rush map at: [http://goldenhopemines.com/\\_resources/claimMap.pdf](http://goldenhopemines.com/_resources/claimMap.pdf)

## Bellechasse-Timmins Gold Deposit Highlights

- Gold mineralization has been followed for 850m (2,790ft) along strike, 650m (2,130ft) across strike and to 485m (1,591ft) depth
- 12 parallel zones have already been identified within this area

### T-1 Zone:

- Drilled to 485m (1,591ft) depth
- Mineralization area at surface ~4,000m<sup>2</sup> (45,192ft<sup>2</sup>)
- Current unconfirmed potential: ~ 10 to 15 million tonnes to 1000m below surface

### T-2A & T-2B Zones:

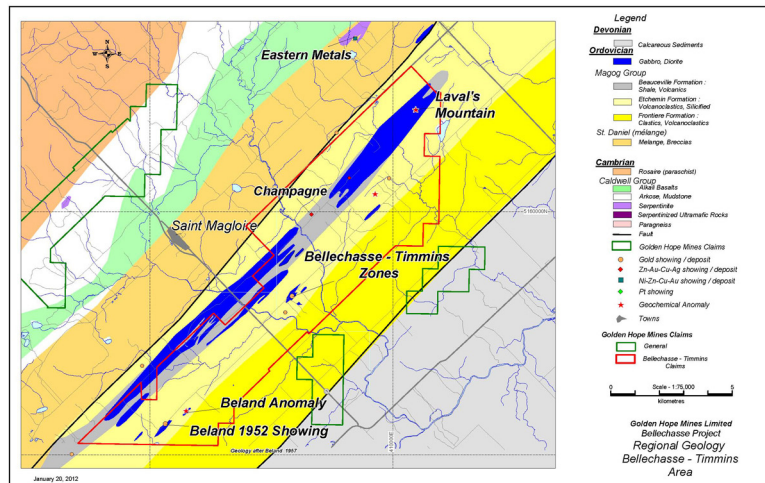
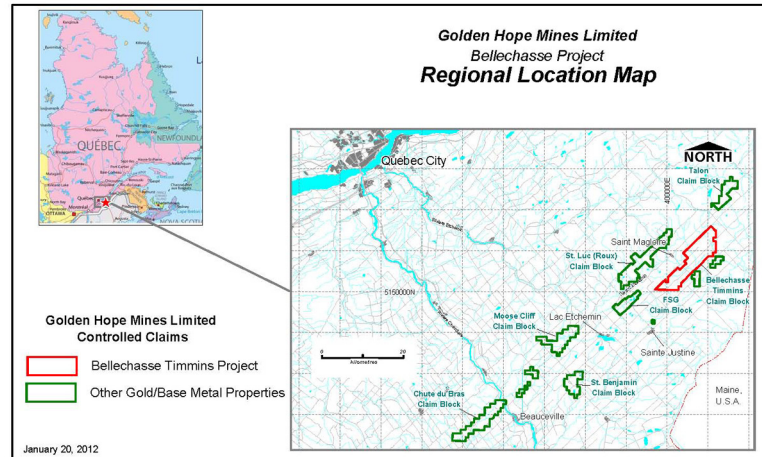
- Drilled to 340m (1,115ft) depth
- Mineralized area near surface and diamond drill information is ~2,500m<sup>2</sup> (26,910ft<sup>2</sup>)
- Current unconfirmed potential to 1000 meters depth: ~5 to 10 million tonnes

### Ascot/Road Zone:

- Drilled to 195m (640ft) depth, followed for over 600m (1,970ft) on strike and still open
- Mineralized near surface, the zone is still open

### 88 Zone:

- Drilled to 290m (950ft) depth
- 8 zones identified
- The zones are open



## Bellechasse-Timmins Significant Drill Results

Hole Number	Zone	From (Meter)	To (Meter)	Length (Meters)	Grade (g/t)
BD2011-171	T1	15	48	33	4.39
BD2011-167	T1	374	380	6	1024
<i>Including</i>		374	375	1	6140
BD2011-124	T1	167	180	13	4.98
BD2011-125	T2B	222	233	10	7.57
BD2011-133	T2A	371	380	9	9.05
BD2011-117	88B	255	289	34	3.68
BD2011-157	T1	1	380	380	0.61
<i>Including</i>		333	382	49	2.53
BD2011-162	T1	152	264	112	1.33
BD2011-166	T2	260	385	125	0.52
<i>Including</i>		353	385	32	1.29

## Our Team

**Frank Candido** President, Director  
**Roland Boivin** Chief Financial Officer  
**Robert J. Stocks** Chairman of the Board  
**Marc A. Drouin** Director  
**Michael T. Zurowski**, P.Eng. Director  
**William C. Needham**, Director  
**James Tilsley** P.Eng. Chief Geologist, QP 43-101  
**Paul R. J. Nicholls** P.Eng. Senior Project Geologist, QP 43-101  
**Frank S. Glass** P.Geo, M.Sc Consulting Geologist  
**Dany Boilard** Field and Logistics Manager, Bellechasse Project  
**Sasha Asgary** Director of Corporate Communication

## Share Structure **GNH: TSX-V**

**Issued Shares** **130,835,835**  
Options (Mgmt. & Directors) 9,065,000 (4,225,000 at \$0.26)  
Warrants 17,797,117 (13,849,034 at \$0.25 May 2012)  
Fully Diluted 157,697,952

Cash position: C\$ 2,800,000 (Jan., 2011)  
52 week range: High: \$0.50 (Mar. 4, 2011) Low: \$0.10 (Dec 21, 2011)

## Contact info



Golden Hope Mines Limited  
4207 Ste-Catherine Street West  
Suite 201  
Montreal, Quebec, Canada  
H3Z 1P6  
Tel: 514-750-8218  
Fax: 416-864-0175  
www.goldenhopemines.com  
info@goldenhopemines.com

## Forward Looking Statement

Golden Hope Mines Limited may make forward-looking statements with regard to the company's projects and business plans. Statements may also be made with regard to the company's business strategy, contractors, and market position which could be construed as forward-looking. Forward-looking statements are subject to risks and uncertainties that could cause results to be materially different than expectations.

Any statement regarding the potential quantity of mineralization is conceptual in nature as there has been insufficient exploration to define a 43-101 mineral resource on the properties. Any historical mineral quantities listed are not presently 43-101 compliant.

The technical contents of this document have been reviewed by James Tillsley, P.Geo, a Qualified Person pursuant to Canada's National Instrument 43-101. Mr. Tilsley is Chief Geologist for Golden Hope. The technical information relating to Golden Hope's material properties disclosed herein is based upon its previously filed technical report, prepared and filed pursuant to National Instrument 43-101, entitled "Technical Report - Bellechasse-Timmins Property, Bellechasse-Beauce Region, Southeastern Québec", dated September 12, 2010 and prepared on behalf of Golden Hope by Ronald H. McMillan, Ph.D., P.Geo., P.Eng.

